

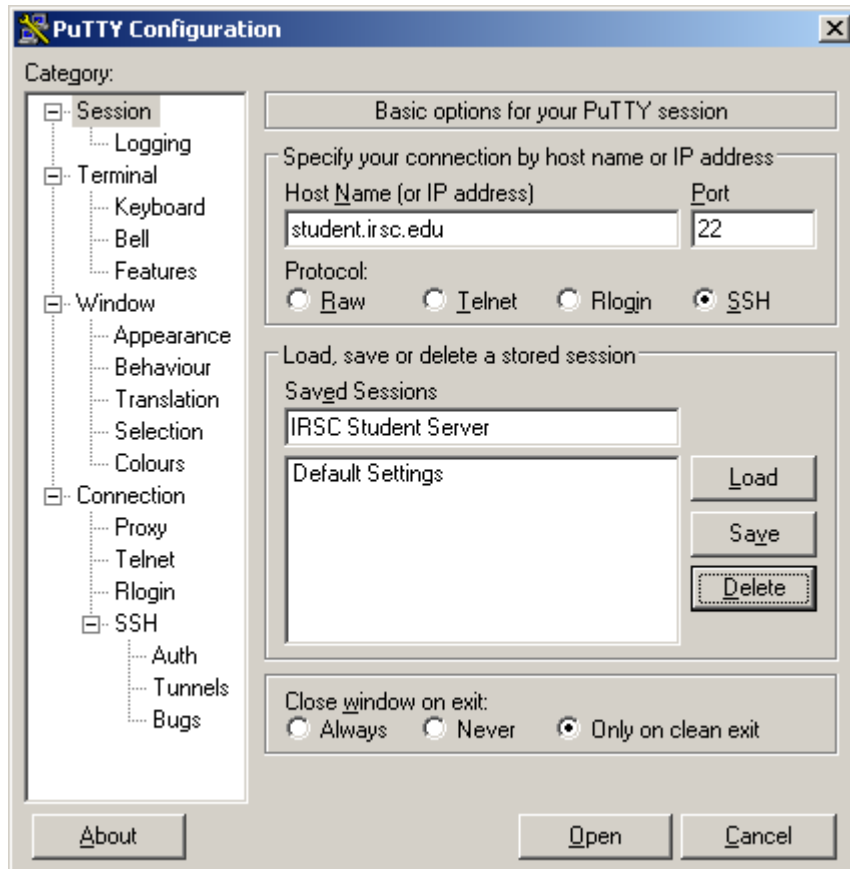
In order to remotely access an account provided for each student in CGS 2760 on an IRSC server running Linux, students must install and use a secure (SSH/Telnet protocol) remote login client on their computer. For instructions on how to do this, see the web page at:

<http://www.gibson.vero-beach.fl.us/classes/cgs2760/getputty.html>

After installing PuTTY on your system, you should see an icon on your desktop that looks like this:



Choose that icon to run the PuTTY Client and you should see a configuration dialog box like:



In the textbox labeled Host Name (or IP address), type the name of the IRSC Student Linux server as shown in the illustration above: student.irsc.edu (do not press the Enter key).

Then be sure that the SSH protocol option button has been selected. The value displayed in the Port textbox should be 22.

Now type "IRSC Student Server" into the textbox labeled Saved Sessions and then click on the [Save] button.

Now initiate your SSH remote login by clicking on the [Open] button. On the first attempt to connect to the secure server, you should see a dialog box similar to the one below.

This security alert is displayed only during the first connection to a new server. On subsequent attempts, the program will use a key saved in its cache storage area.

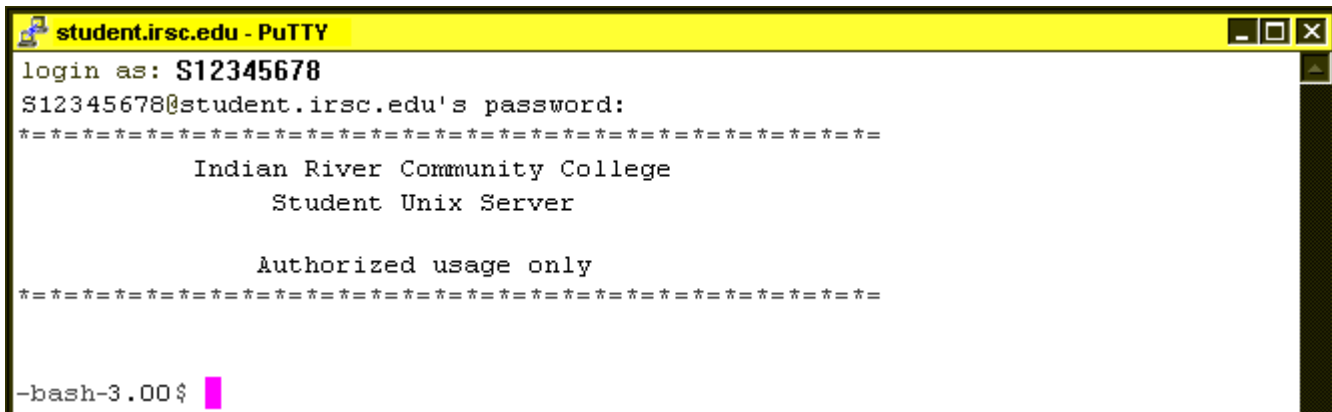
Choose the [Yes] button. You should see a black and white console window open similar to the (chopped-off) one on the page below.



Note: The colors in illustrations below have been altered to reduce the usage of ink when printed.



Students should enter their IRSC Student ID with the first letter capitalized and without dashes or spaces between the remaining 8 numerals. Enter yours now. When prompted for your password, enter the PIN number (4-6) digits that you use for the IRSC Student Registration system (also the Blackboard distance e-learning server). Upon successful login, the console window should look similar to the one below.



Notice the system prompt indicating that you are using the bash shell (version 3.00). From this point forward, as long as the console window remains the active window, every keystroke that you press will be transmitted to the IRCC Student server just as if you were seated at that machine on our campus. And you should see every character that would normally have been displayed on a local terminal at the college campus. You can now proceed with your bash session. When you are done, either type the command "exit" and press the Enter key or simply press the keystroke combination Ctrl+D, which is the End-of-File (EOF) character in bash. Remember that Linux treats all devices as if they were files. Thus if you produce an EOF character on the device it is reading, it will think it has hit the end of that "file" and close it. In the case of the virtual terminal created by PuTTY, that will close the program.

The next time that you use the PuTTY program on the same computer to access the IRCC Student server, the login procedure will be slightly different. You will still see the same PuTTY Configuration dialog box when you launch the PuTTY program. But instead of entering the hostname of the server into the textbox labeled Host Name (or IP address), you will now be able to select the saved entry "IRCC Student Server" in the Saved Sessions list below. After selecting the label "IRCC Student Linux Server", click on the button labeled [Load]. The previously entered configuration will be reloaded and you can then proceed with the login by choosing the [Open] button.

PuTTY will dispense with the display of the Security Alert given on the initial login and immediately produce the "login as:" prompt in a fresh console window. The rest of the procedure should be the same as the first time.

You *might* want to experiment with the various settings in the PuTTY Configuration dialog box prior to connecting to see what effect they have on a session. After loading the IRCC Student Server configuration, click on each setting category in the column on the left side of the PuTTY Configuration dialog box and view the various setting options on the right side of the screen. You can change and try any of these without altering your saved configuration. If you find some settings that you want to change permanently, remember to press the Save button.